



MATERIALS

Caron® Simply Soft® (Solids: 6 oz /170.1 g; 315 yds/288 m;
Heathers: 5 oz/141 g; 250 yds/228 m)

| | |
|--|----------------|
| Contrast A Cobalt Blue (9784) | 2 balls |
| Contrast B Gold (9782) | 1 ball |
| Contrast C Black (9727) | 1 ball |
| Contrast D Gray Heather (H9509) | 2 balls |
| Contrast E Charcoal Heather (H9508) | 1 ball |

Size U.S. H/8 (5 mm) crochet hook **or size needed to obtain gauge.**
Stuffing.

ABBREVIATIONS

Approx = Approximately

Beg = Begin(ning)

Ch = Chain(s)

Cont =Continue(ing)

Inc = Increase(ing)

Rem = Remain(ing)(s)

Rep = Repeat

Rnd(s) = Round(s)

RS = Right side

Sc = Single crochet

Sc2tog = Draw up a loop in each of next 2 stitches. Yoh and draw through all loops on hook

Sl st = Slip stitch

Sp = Space

St(s) = Stitch(es)

Tog = Together

WS = Wrong side

Yoh = Yarn over hook

 CROCHET | SKILL LEVEL: INTERMEDIATE

MEASUREMENTS

Admit One Ticket Pillow: Approx 20" [51 cm] long x 15½" [39.5 cm] wide x 2¾" [7 cm] deep.

Star Pillow: Approx 19" [48 cm] wide point to point x 2¾" [7 cm] deep.

Film Reel Pillow: Approx 13½" [34.5 cm] diameter x 2¾" [7 cm] deep.

GAUGE

13 sc and 14 rows = 4" [10 cm].

INSTRUCTIONS

Notes:

When working from Chart I, note each square of chart is equal to 1 sc and **reading RS rows from right to left** and WS rows from left to right. Carry color not in use across top of entire previous row and work sts around it. This will ensure even gauge as all sts will be worked around an extra strand of yarn held across top of previous row. Carry both colors up side of work.

ADMIT ONE TICKET PILLOW

Front and Back (make alike)

With A, ch 66.

1st row: (RS). 1 sc in 2nd ch from hook. 1 sc in each ch to end of ch. Turn. 65 sc.

2nd row: Ch 1. 1 sc in each sc to end of row. Turn.

First 2 rows of Chart I are now complete. Chart I is shown on page 4.

Rep 2nd row and cont working Chart I until 53rd row of chart is complete.

Fasten off.

Gusset

With A, ch 10.

1st row: 1 sc in 2nd ch from hook. 1 sc in each ch to end of chain. Turn. 9 sc.

2nd row: Ch 1. 1 sc in each sc to end of row. Turn.

Replast row until Gusset measures length to fit around outer edge of Admit One Ticket shape.

Fasten off.

Sew Gusset ends tog.

FINISHING

Position Gusset seam at lower edge of Front or Back, then pin Gusset in position to outer edges of Front and Back. With A, WS tog and working through both thicknesses, join Front and Gusset tog with 1 rnd of sc. Rep for Back, leaving an opening approx 4" [10 cm] wide. Stuff Pillow. Join opening closed. Fasten off.

STAR PILLOW

Front and Back (make alike)

With B, ch 2.

1st rnd: 8 sc in 2nd ch from hook. Join with sl st to first sc. 8 sc.

2nd rnd: Ch 1. 2 sc in first sc. 2 sc in each sc around. Join with sl st to first sc. 16 sc.

3rd rnd: Ch 1. 1 sc in first sc. *2 sc in next sc. 1 sc in next sc. Rep from * to last sc. 2 sc in last sc. Join with sl st to first sc. 24 sc.

4th rnd: Ch 1. 1 sc in each of first 2 sc. *2 sc in next sc. 1 sc in each of next 2 sc. Rep from * to last sc. 2 sc in last sc. Join with sl st to first sc. 32 sc.

5th rnd: Ch 1. 1 sc in each of first 3 sc. *2 sc in next sc. 1 sc in each of next 3 sc. Rep from * to last sc. 2 sc in last sc. Join with sl st to first sc. 40 sc.

6th rnd: Ch 1. 1 sc in each of first 4 sc. *2 sc in next sc. 1 sc in each of next 4 sc. Rep from * to last sc. 2 sc in last sc. Join with sl st to first sc. 48 sc.

7th rnd: Ch 1. 1 sc in each of first 5 sc. *2 sc in next sc. 1 sc in each of next 5 sc. Rep from * to last sc. 2 sc in last sc. Join with sl st to first sc. 56 sc.

8th rnd: Ch 1. 1 sc in each of first 6 sc. *2 sc in next sc. 1 sc in each of next 6 sc. Rep from * to last sc. 2 sc in last sc. Join with sl st to first sc. 64 sc.

9th rnd: Ch 1. 1 sc in each of first 7 sc. *2 sc in next sc. 1 sc in each of next 7 sc. Rep from * to last sc. 2 sc in last sc. Join with sl st to first sc. 72 sc.

10th rnd: Ch 1. 1 sc in each of first 8 sc. *2 sc in next sc. 1 sc in each of next 8 sc. Rep from * to last sc. 2 sc in last sc. Join with sl st to first sc. 80 sc.

11th rnd: Ch 1. 1 sc in each of first 9 sc. *2 sc in next sc. 1 sc in each of next 9 sc. Rep from * to last sc. 2 sc in last sc. Join with sl st to first sc. 88 sc.

12th rnd: Ch 1. 1 sc in each of first 10 sc. *2 sc in next sc. 1 sc in each of next 10 sc. Rep from * to last sc. 2 sc in last sc. Join with sl st to first sc. 96 sc.

13th rnd: Ch 1. 1 sc in each of first 11 sc. *2 sc in next sc. 1 sc in each of next 11 sc. Rep from * to last sc. 2 sc in last sc. Join with sl st to first sc. 104 sc.

14th rnd: Ch 1. 1 sc in each of first 12 sc. *2 sc in next sc. 1 sc in each of next 12 sc. Rep from * to last sc. 2 sc in last sc. Join with sl st to first sc. 112 sc.

15th rnd: Ch 1. 1 sc in each of first 13 sc. *2 sc in next sc. 1 sc in each of next 13 sc. Rep from * to last sc. 2 sc in last sc. Join with sl st to first sc. 120 sc. Fasten off.

Star Points: Each point is worked over 24 sts. 5 points total. Join with sl st to next sc of last rnd.

1st row: With B, ch 1. Beg in same sc as last sl st, 1 sc in each of next 24 sc. Turn.

2nd row: Ch 1. Sc2tog. 1 sc in each sc to last 2 sc. Sc2tog. Turn. 22 sc.

3rd row: Ch 1. 1 sc in first sc. 1 sc in each sc to end of row. Turn. Rep 2nd and 3rd rows until 2 sc rem.

Next row: Ch 1. Sc2tog.

Fasten off.

Rep Star Points 4 more times.

Edging: Join C with sl st to any Star Point. Ch 1. 3 sc in same sp as last sl st. Work 1 rnd of sc evenly around outer edge, working 3 sc in each Star Point. Join with sl st to first sc. Fasten off.

Gusset

With C, ch 10.

1st row: 1 sc in 2nd ch from hook. 1 sc in each ch to end of chain. Turn. 9 sc.

2nd row: Ch 1. 1 sc in each sc to end of row. Turn.

Rep last row until Gusset measures length to fit around outer edge of Star shape.

Fasten off.

Sew Gusset ends tog.

FINISHING

Position Gusset seam at lower edge of Star Front or Back and pin Gusset in position around outer edges of Star Front and Back. With C, WS of pieces tog and working through both thicknesses, join Star Front and Gusset tog with 1 rnd of sc. Rep for Star Back, leaving an opening approx 4" [10 cm] wide. Stuff Star. Join opening closed. Fasten off. With C and using chain stitch, embroider 'STAR' onto Front of Star Pillow.

FILM REEL PILLOW

Front and Back (make alike)
With D, ch 2.

1st rnd: 8 sc in 2nd ch from hook. Join with sl st to first sc. 8 sc.

2nd rnd: Ch 1. 2 sc in first sc. 2 sc in each sc around. Join with sl st to first sc. 16 sc.

3rd rnd: Ch 1. 1 sc in first sc. *2 sc in next sc. 1 sc in next sc. Rep from * to last sc. 2 sc in last sc. Join with sl st to first sc. 24 sc.

4th rnd: Ch 1. 1 sc in each of first 2 sc. *2 sc in next sc. 1 sc in each of next 2 sc. Rep from * to last sc. 2 sc in last sc. Join with sl st to first sc. 32 sc.

5th rnd: Ch 1. 1 sc in each of first 3 sc. *2 sc in next sc. 1 sc in each of next 3 sc. Rep from * to last sc. 2 sc in last sc. Join with sl st to first sc. 40 sc.

6th rnd: Ch 1. 1 sc in each of first 4 sc. *2 sc in next sc. 1 sc in each of next 4 sc. Rep from * to last sc. 2 sc in last sc. Join with sl st to first sc. 48 sc.

7th rnd: Ch 1. 1 sc in each of first 5 sc. *2 sc in next sc. 1 sc in each of next 5 sc. Rep from * to last sc. 2 sc in last sc. Join with sl st to first sc. 56 sc.

8th rnd: Ch 1. 1 sc in each of first 6 sc. *2 sc in next sc. 1 sc in each of next 6 sc. Rep from * to last sc. 2 sc in last sc. Join with sl st to first sc. 64 sc.

9th rnd: Ch 1. 1 sc in each of first 7 sc. *2 sc in next sc. 1 sc in each of next 7 sc. Rep from * to last sc. 2 sc in each sc. Join with sl st to first sc. 72 sc.

Cont in this manner, inc 8 sc evenly around every rnd until there are 184 sc. Fasten off.

Film Reel Holes (make 12)
With E, ch 10.

1st row: 1 hdc in 3rd ch from hook. 1 hdc in each ch to end of chain. Turn. 8 hdc.

2nd row: Ch 2. 1 hdc in each of first 3 hdc. 2 hdc in each of next 2 hdc. 1 hdc in each hdc to end of row. Turn. 10 hdc.

3rd row: Ch 2. 1 hdc in first hdc. 1 hdc in each hdc to end of row. Turn.

4th row: Ch 2. 1 hdc in each of first 4 hdc. 2 hdc in each of next 2 hdc. 1 hdc in each hdc to end of row. Turn. 12 hdc.

5th row: As 3rd row.

6th row: Ch 2. 1 hdc in each of first 5 hdc. 2 hdc in each of next 2 hdc. 1 hdc in each hdc to end of row. Turn. 14 hdc.

7th row: As 3rd row.

8th row: Ch 2. 1 hdc in each of first 6 hdc. 2 hdc in each of next 2 hdc. 1 hdc in each hdc to end of row. Turn. 16 hdc.

9th row: As 3rd row. Fasten off.

Gusset

Notes: When working from Chart II, note each square of chart is equal to 1 sc and read RS rows from right to left and WS rows from left to right. Carry color not in use across top of entire previous row and work sts around it. This will ensure even gauge as all sts will be worked around an extra strand of yarn held across top of previous row. Carry both colors up side of work. Chart II is shown on page 4.

With D, ch 12.

1st row: (RS). 1 sc in 2nd ch from hook. 1 sc in each ch to end of ch. Turn. 11 sc.

Row 1 of Chart II is now complete.

2nd row: Working row 2 of Chart II, ch 1. 1 sc in each sc to end of row. Turn.

Rep 2nd row and cont working Chart II until 6th row of chart is complete.

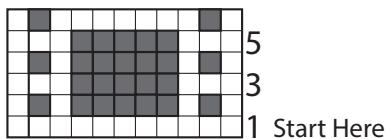
Rep 1st to 6th rows of chart until Gusset measures length to fit around outer edge of Front or Back, ending on a 6th row of chart. Fasten off.

Sew Gusset ends tog.

FINISHING

Position Gusset seam at lower edge of Front or Back and pin Gusset in position to outer edges of Front and Back. With WS tog, D and working through both thicknesses, join Front and Gusset tog with 1 rnd of sc. Rep for Back, leaving an opening approx 4" [10 cm] wide. Stuff Pillow. Join opening closed. Fasten off. Sew Film Reel Holes on Front and Back of Pillow as shown in picture.

Chart II



Key

- = Contrast D
- = Contrast E

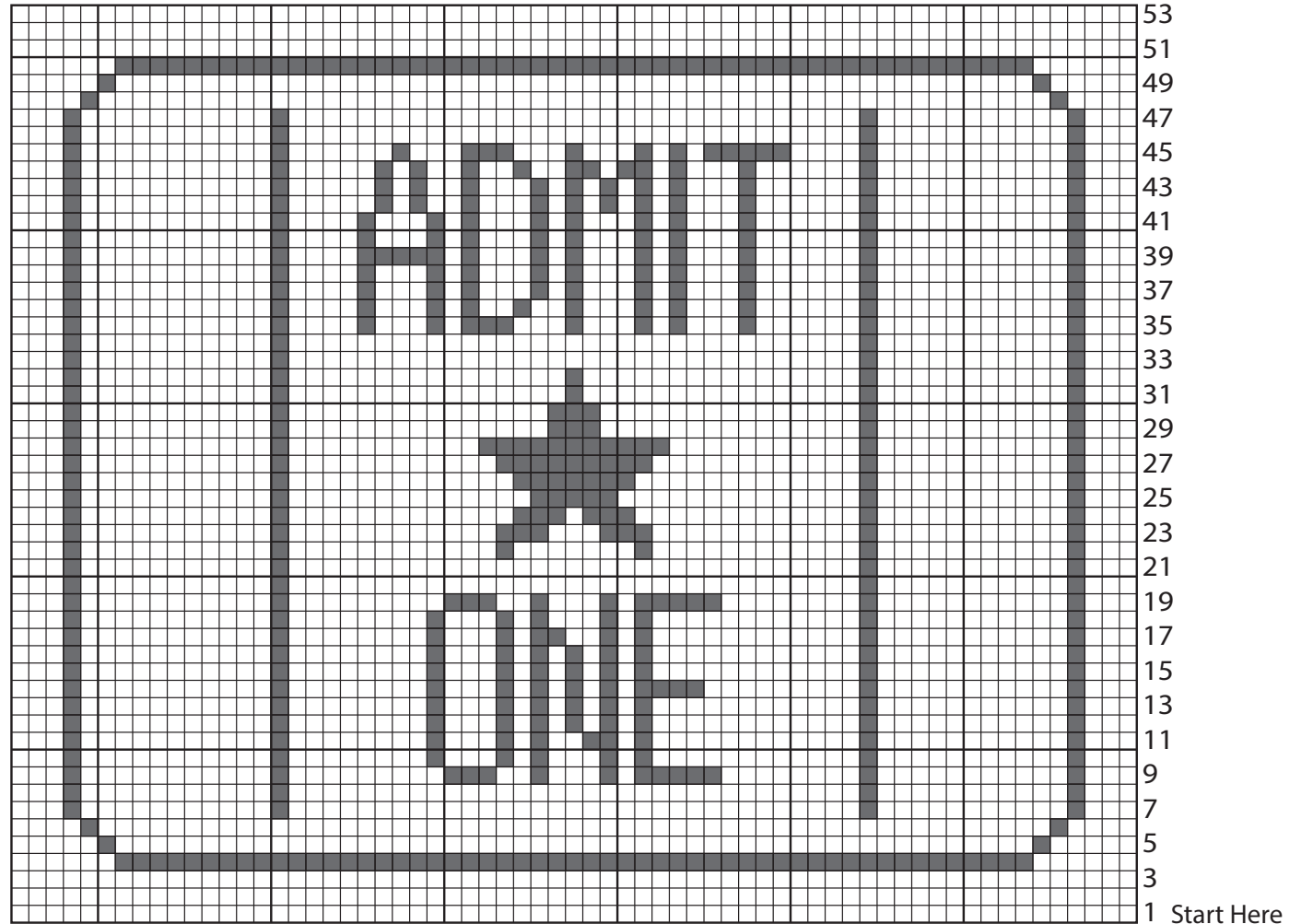


Chart I

Key

- = Contrast A
- = Contrast C